

PALAZZO LEOPOLDO
Dimora Storica & Spa



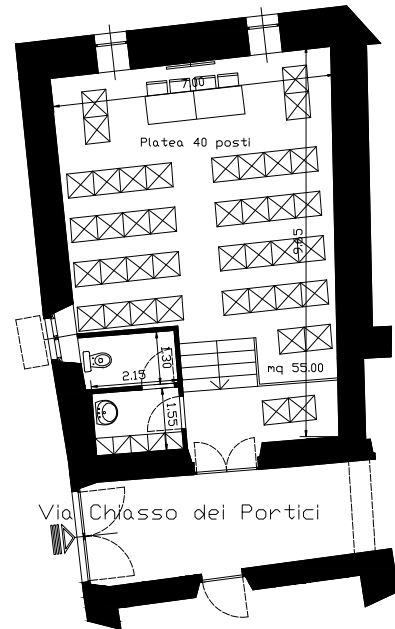
Via Roma, 33
Radda in Chianti (SI)
Tel. +39.0577.735605
Fax. +39.0577.738031
info@palazzoleopoldo.it
www.palazzoleopoldo.it

*A great location, between **Siena and Florence**, close to **Chianti area**, an unique atmosphere, a SPA and much more make Palazzo Leopoldo the perfect choice for an in-house event. Built in the 13th Century, this building was an 'ospitalae' for pilgrims and abounded children and then a farm right in the center of the village; till 1999 the private house of the family for the last 500 years! Nowadays, completely renovated, is a perfect mix of modern architecture and respect for the tradition.*

Facilities:

33 Rooms: Classic, Superior, Deluxe, Junior and Suite; 2 Breakfast Rooms (40 – 70 sqm in the old kithchen); 1 Restaurant 'La Perla del Palazzo (100 sqm in the old 'farm' and a garden); Wellness Center 'SPA Vignavecchia (heated Jacuzzi pool, sauna, hammam, rooms for massages); Wine Bar 'Caffè San Niccolò'.

Via Roma, 33



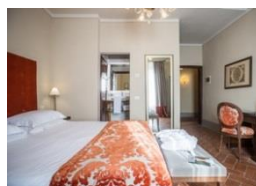
Usefull Information

Pisa Airport 105 km – 1h 30'
Florence Airport 60 km – 1h

Main distances:
Firenze 55 km – Siena 35 km – San Gimignano 40 km – Castellina in Chianti 10 km – Greve in Chianti 20 km – Outlet Prada 25 km – Outlet Gucci 35 km

Tecnical Equipment Sala del Granduca

Screen - Lim
Video beamer
Wi-fi
Flip chart



Meeting room	Sizes				Arrangements			
	Sqm	Lenght	Width	Height	Theater	Single T.	U Shape	Classroom
Del Granduca	60	12	6,4	3,6	40	20	20	16
La Cantinetta SNR	37	8	5	3,2	30	20		12