



GRAND HOTEL PLAZA
ROMA

Meetings & Events



The History

For almost a century the **Grand Hotel Plaza** in Via del Corso, at the heart of the ancient and baroque Rome, a few steps away from Via Condotti and Piazza di Spagna, has resided in Palazzo Lozzano, by the name of the Count-banker Antonio, who decided for its construction in the mid nineteenth century.

The building which faces the Church of San Carlo, dedicated to the Milanese people living in the capital (beautiful thez Pietro da Cortona's dome, built in 1668), and which gives the back to Trinità dei Monti and Villa Medici, was built in 1837 by the architect Antonio Sarti.

Some years later the same Sarti was responsible for the remake of Palazzo Lozzano, bringing it from "*Locanda di Roma*" to "*Albergo di Roma*". During this period what was later called **Grand Hotel Plaza** reached its maximum prestige thanks to its traditions and hospitality.



Only in 1902 the architect Edgardo Negri laid the foundations for the birth of the present **Grand Hotel Plaza**.

The modernization of the building's facades was followed by changes of the interiors that took on that sumptuous liberty style which still characterizes the hotel.

The **majestic marble lion** that stands at the foot of the staircase, is the silent and solemn witness of the first "version" of the hotel.

A lavishness preserved by the restoration carried out by the interior designer Pietro Mongiardino before dying.

The Location



The **Grand Hotel Plaza** is the best choice for those who want to live in the heart of Rome, in a location enveloped by historical charm.

Situated in Via del Corso, between Piazza Venezia and Piazza del Popolo, the **Grand Hotel Plaza** is a few steps away from the most famous and historical monuments and squares of Rome, like Piazza di Spagna, the cinematographic Trevi Fountain, the Colosseum, the Foro Romano and the monumental Piazza della Rotonda, where the Pantheon raises.

The **Vaticano** and **Castel Sant'Angelo** can be reached within a few minutes walk or by public transportation. Some of the most elegant and nicest fashion streets of the historical center run along the hotel, where the big names of the fashion industry dominate, like *Gucci*, *Louis Vuitton*, *Sorelle Fontana*, *Valentino*, *Armani*, *Burberry*, *Dolce & Gabbana*, *Cesare Paciotti*, *Fendi*, *Max Mara*, *Ferragamo*, *Bulgari*, *Prada*, *Dior*, *Missoni*, *Tiffany* and many others, making the shopping experience unforgettable.

IN THE SURROUNDINGS

- | | |
|------------------------------------------|-------------------------------------------|
| ▶ Piazza di Spagna 400 m (5 min.) | ▶ Piazza Navona 1km (12 min.) |
| ▶ Fontana di Trevi 650 m (8 min.) | ▶ Galleria Borghese 2 km (30 min.) |
| ▶ Pantheon 750 m (10 min.) | ▶ Colosseo 2 km (30 min.) |

Our Services

180 ROOMS and SUITES

•
2 Presidential Suites

•
30 Suites

•
40 Private Terraces

•
Restaurant & Bar

•
Panoramic Terraces

•
Meeting Rooms

•
Weddings and Events

•
Reception 24h services

•
Room service 24h

•
Limo service

•
Free Wi-Fi

•
Exclusive cultural Tours

•
Fitness Room

•
Babysitting service

•
Wellness services on demand

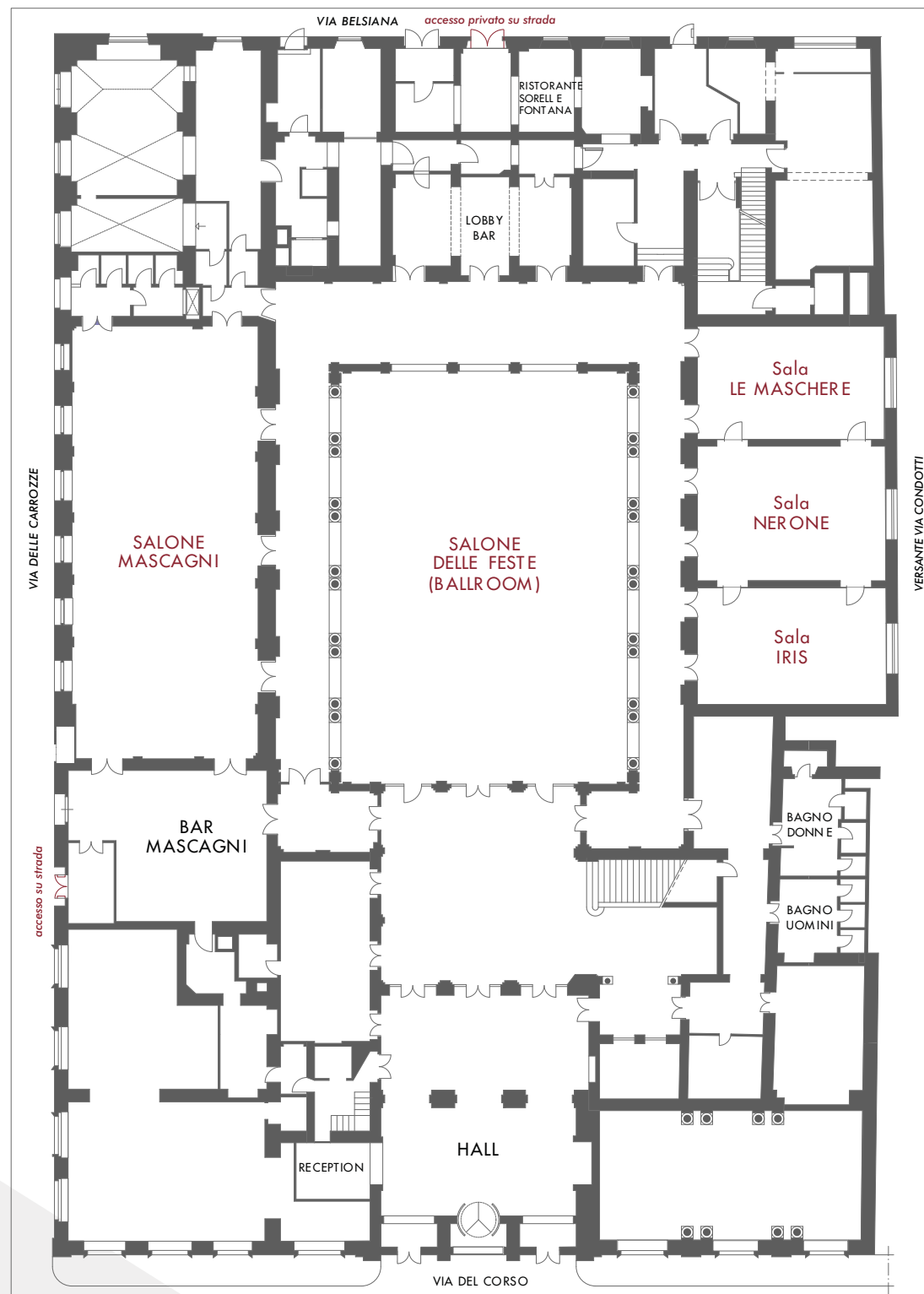
•
Small pets service



Event Spaces

As in the past, the **Grand Hotel Plaza Roma** remains a reference point for the social, cultural and political life of the Eternal City. The unbelievable position and the evocative atmosphere are here enhanced by the courtesy and professionalism of the services offered.

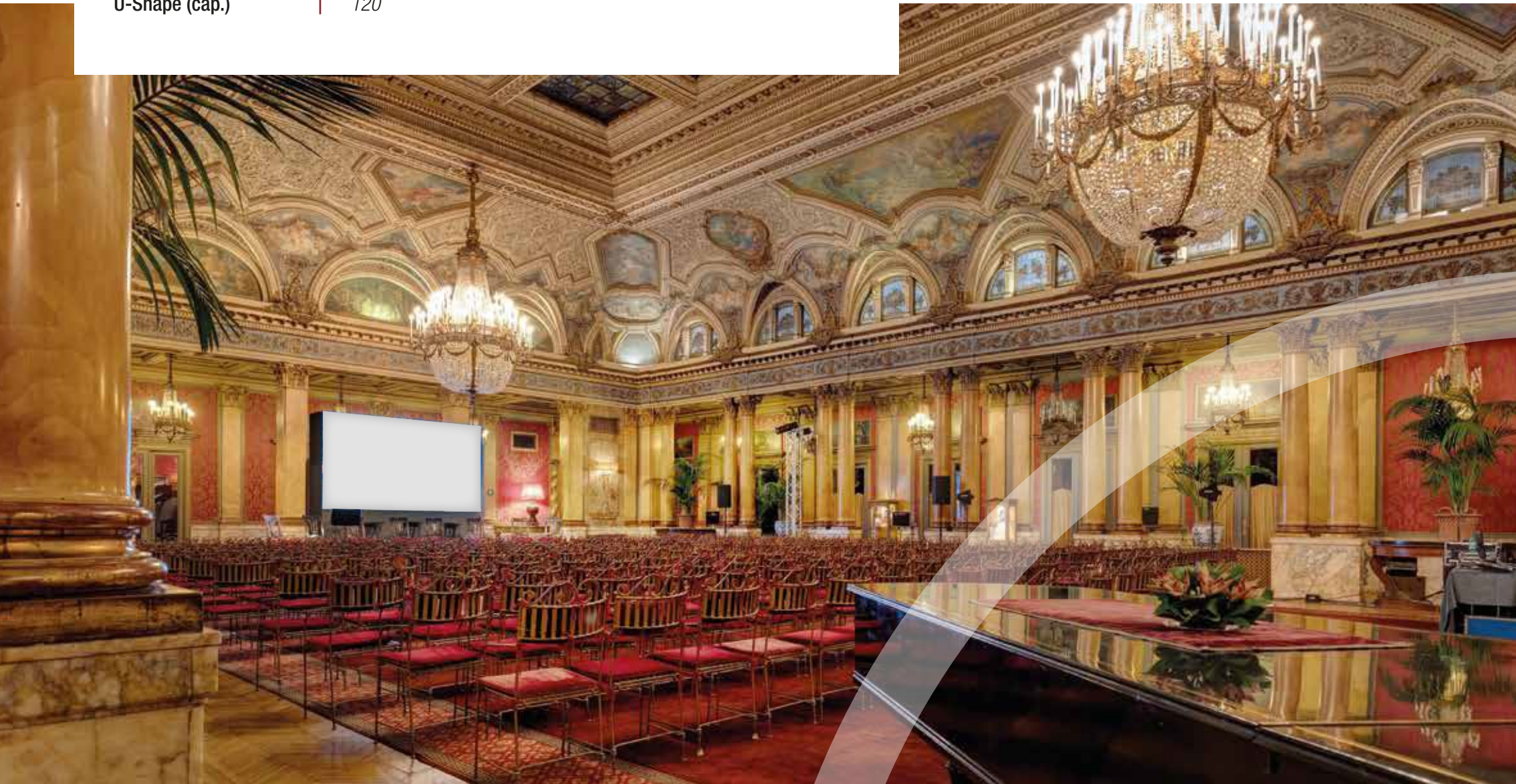
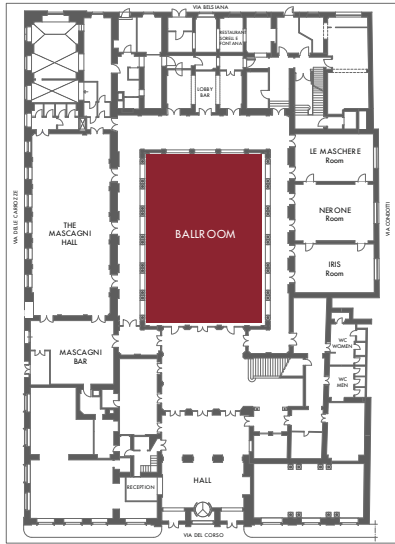
The magnificent “**Ballroom**” on the ground floor and the 4 adjacent rooms, can be set-up with the latest technological equipment, creating a perfect link between history and modern times, ensuring the most effective realization for every kind of private gathering and unique event.



Event Spaces

BALLROOM

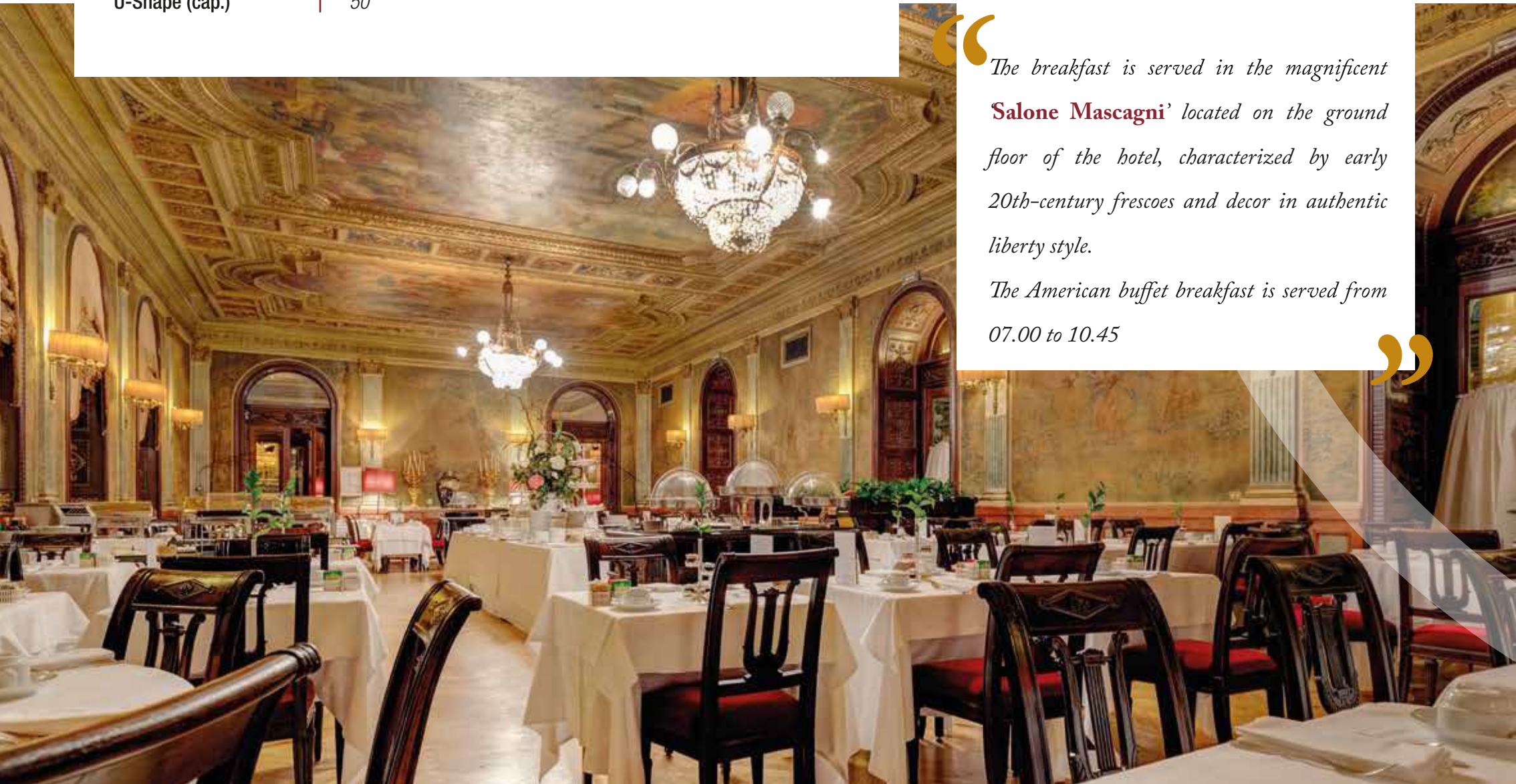
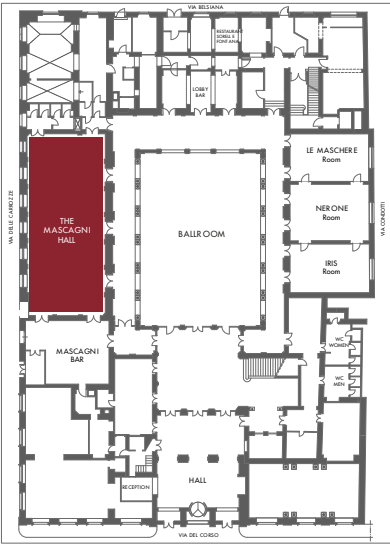
Area (mq ² /ft ²)	309 / 3326	Cocktail (cap.)	400
Length (m/ft)	20,60 / 68	Cabaret (cap.)	160
Width (m/ft)	15,00 / 49	Sitting banquet (cap.)	300
Height (m/ft)	8,50 / 28	Standing banquet (cap.)	400
Single table	140	Air conditioning	YES
Theater room (cap.)	350	Three-phase	YES
School desks	180	Acoustic plant	YES
U-Shape (cap.)	120		



Event Spaces

THE MASCAGNI HALL

Area (mq ² /ft ²)	209 / 2250	Cocktail (cap.)	260
Length (m/ft)	22 / 73	Cabaret (cap.)	90
Width (m/ft)	9,50 / 32	Sitting banquet (cap.)	160
Height (m/ft)	4,70 / 16	Standing banquet (cap.)	260
Single table	60	Air conditioning	YES
Theater room (cap.)	220	Three-phase	YES
School desks	110	Acoustic plant	YES
U-Shape (cap.)	50		



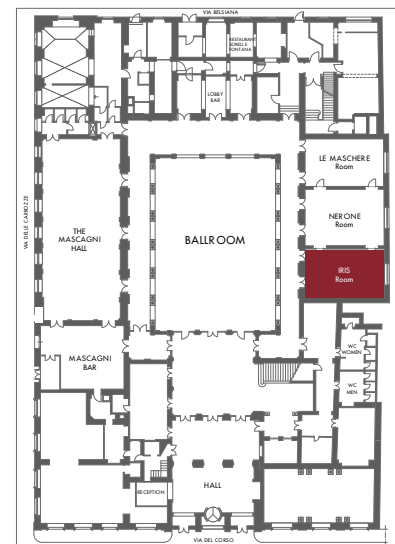
*The breakfast is served in the magnificent **Salone Mascagni**’ located on the ground floor of the hotel, characterized by early 20th-century frescoes and decor in authentic liberty style.*

The American buffet breakfast is served from 07.00 to 10.45

Event Spaces

IRIS ROOM

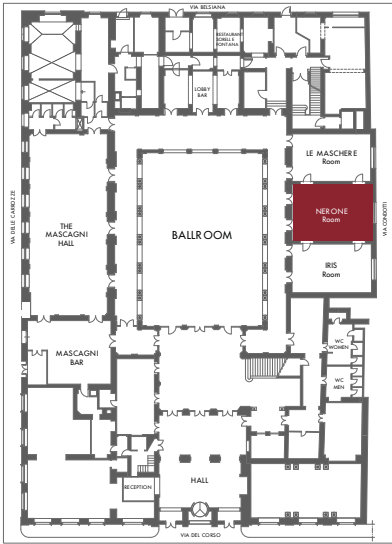
Area (mq ² /ft ²)	56/ 603	Cocktail (cap.)	50
Lenght (m/ft)	9,50 / 31	Cabaret (cap.)	20
Width (m/ft)	5,90 / 19	Sitting banquet (cap.)	40
Height (m/ft)	4,70 / 16	Standing banquet (cap.)	50
Single table	30	Air conditioning	YES
Theater room (cap.)	40	Three-phase	YES
School desks	25	Acoustic plant	YES
U-Shape (cap.)	25		



Event Spaces

NERONE ROOM

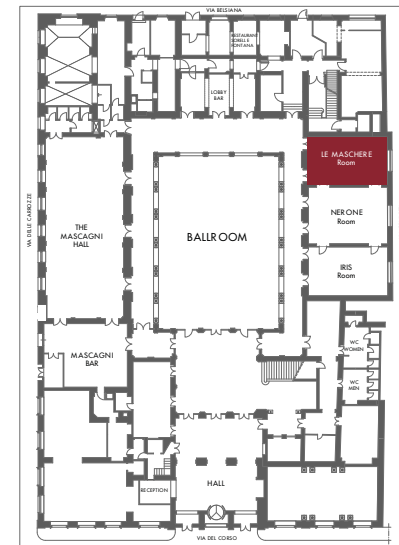
Area (mq ² /ft ²)	66/ 711	Cocktail (cap.)	70
Lenght (m/ft)	9,50 / 32	Cabaret (cap.)	30
Width (m/ft)	7 / 23	Sitting banquet (cap.)	60
Height (m/ft)	4,70 / 16	Standing banquet (cap.)	70
Single table	40	Air conditioning	YES
Theater room (cap.)	70	Three-phase	YES
School desks	35	Acoustic plant	YES
U-Shape (cap.)	35		



Event Spaces

LE MASCHERE ROOM

Area (mq ² /ft ²)	55/ 592	Cocktail (cap.)	60
Lenght (m/ft)	9,50 / 32	Cabaret (cap.)	30
Width (m/ft)	5,75 / 19	Sitting banquet (cap.)	50
Height (m/ft)	4,70 / 16	Standing banquet (cap.)	60
Single table	35	Air conditioning	YES
Theater room (cap.)	60	Three-phase	YES
School desks	35	Acoustic plant	YES
U-Shape (cap.)	30		



Event Spaces

MASCAGNI LIVING ROOM

Area (mq ² /ft ²)	56/ 603	Cocktail (cap.)	60
Lenght (m/ft)	6,80 / 23	Cabaret (cap.)	24
Width (m/ft)	8,30 / 27	Sitting banquet (cap.)	50
Height (m/ft)	4,70 / 16	Standing banquet (cap.)	50
Single table	36	Air conditioning	YES
Theater room (cap.)	45	Three-phase	YES
School desks	30	Acoustic plant	YES
U-Shape (cap.)	30		



The Terraces

THE ACCADEMIA DI FRANCIA TERRACE

Area (mq ² /ft ²)	220/ 2368	Cocktail (cap.)	80
Lenght (m/ft)	50 / 165	Cabaret (cap.)	/
Width (m/ft)	3,60-12 / 5,80-20	Sitting banquet (cap.)	50
Height (m/ft)	/	Standing banquet (cap.)	60
Conference room (cap.)	/	Air conditioning	NO
Theater room (cap.)	/	Three-phase	NO
School room (cap.)	/	Acoustic plant	/
U-Shape (cap.)	/		

“

*Shrouded in the aroma of its citrus plants, the **Accademia di Francia Terrace** on the fifth floor of the hotel on the fifth floor of the hotel Medici, La Casina Valadier and Villa Borghese and on the other, the Cupola of the Church of Saints Ambrogio and Carlo al Corso, which is almost within touching distance, as well as the rooftops and cupolas of the Eternal City.*

The terrace remains open for the entire season (weather permitting), to clients and their guests.

”

The Terraces

THE TRINITÀ DEI MONTI TERRACE

Area (mq² /ft²)	300/ 3239	Cocktail (cap.)	240
Lenght (m/ft)	33/ 108	Cabaret (cap.)	/
Width (m/ft)	6,80-22 / 10,20-34	Sitting banquet (cap.)	150
Height (m/ft)	/	Standing banquet (cap.)	220
Conference room (cap.)	/	Air conditioning	/
Theater room (cap.)	/	Three-phase	/
School room (cap.)	/	Acoustic plant	/
U-Shape (cap.)	/		

*The **Trinità dei Monti Terrace** is another of the Grand Hotel Plaza's truly enchanting locations where the aromas of the ancient plant intermingle with those inebriating scents from the flowers whit which it is adorned. The Trinità dei Monti Terrace is also on the fifth floor of the Hotel and offers some breathtaking views of Rome's major monuments.*

*The **Trinità dei Monti Terrace** is currently reserved for receptions, banquets, private parties or any other event you might wish to organize at the hotel.*

Sorelle Fontana Restaurant

Inspired by the Italian Fashion Maison and featuring original sketches from the famous designers, our **Sorelle Fontana Restaurant** serves Mediterranean cuisine made of fresh ingredients and authentic local recipes translated in a seasonal "À la Carte Menu".

The Restaurant is open daily for lunch and dinner.



Sorelle Fontana Restaurant

Sorelle Fontana

The Executive Chef at Grand Hotel Plaza is passionate about the local cuisine and creates state of the art Roman dishes, using the very best of seasonal local and regional products, also from the internal private vegetable garden, thus enhancing natural aromas and flavours.



Bar & Restaurant

BAR & RESTAURANT

Stepping into the hotel through the original revolving door, guests are captured by the magnificent Ballroom and its ornate skylight which leads onto the liberty style **Lobby Bar**: ideal location for a cocktail or an afternoon tea and exclusive hideaway from the ‘hustle and bustle’ and the shopping frenzy of the Eternal City.



BAR & BISTROT MASCAGNI

The **Mascagni Bar** offers an atmosphere of the past times, thanks to its fine boiserie, rare fittings in chestnut and cherry and the original ‘Mongiardino’ designs. Dedicated to the famous Maestro, the bar features his original piano and is situated on the ground floor of the hotel.



BREAKFAST

Breakfast is served every day from **07.30** to **11.00**.

It's an buffet breakfast with freshly made salted dishes, a variety of fruits and vegetables as well as exclusive “home made” cakes. Meals for celiacs are available.



The Rooms

CLASSIC ROOM

View	Internal Garden
Dimensions	Single room from 15 sqm, double room from 20 sqm
Beds	French-size bed, double bed or 2 single beds
Suitable for	1 or 2 adults



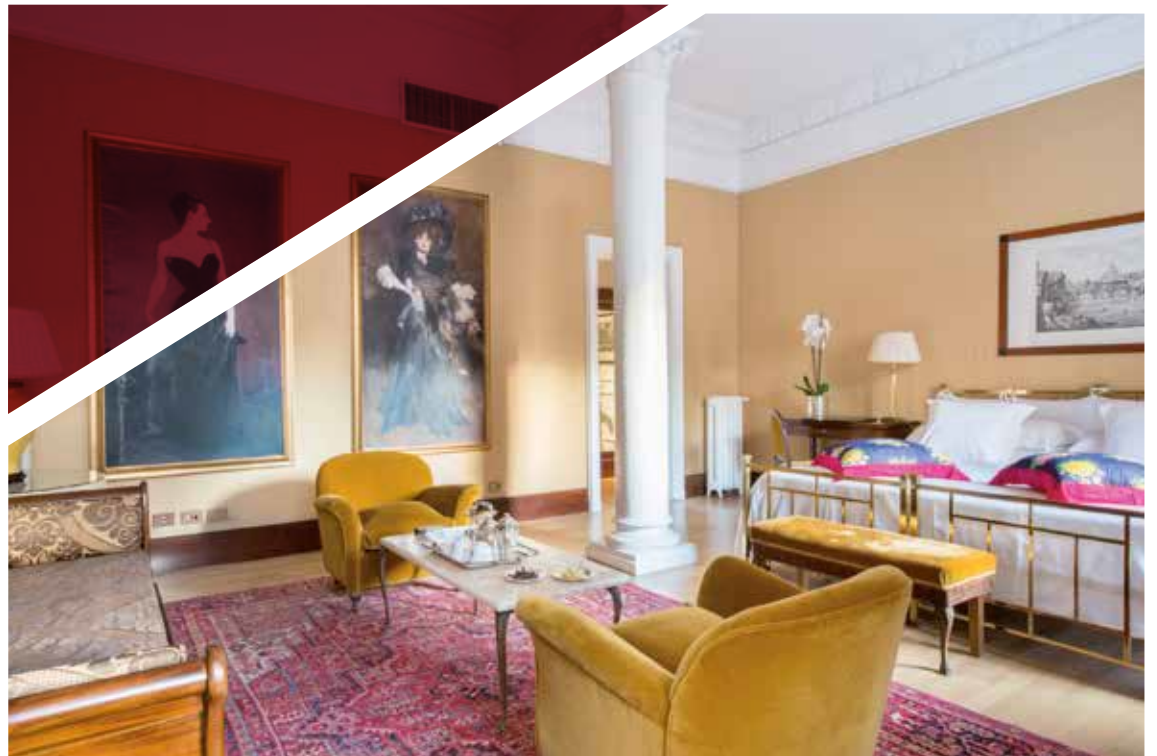
SUPERIOR ROOM

View	Internal Garden / City View
Dimensions	Starting from 30 sqm
Beds	Two single beds (80 x 190 cm) or double bed. (160 x 190 cm)
Suitable for	2 adults 1 extra bed on demand

The Rooms

DELUXE ROOM

View	Internal Garden / City View
Dimensions	Starting from 40 spm
Beds	1 double bed or 2 single beds
Suitable for	2 adults 1 extra bed on demand



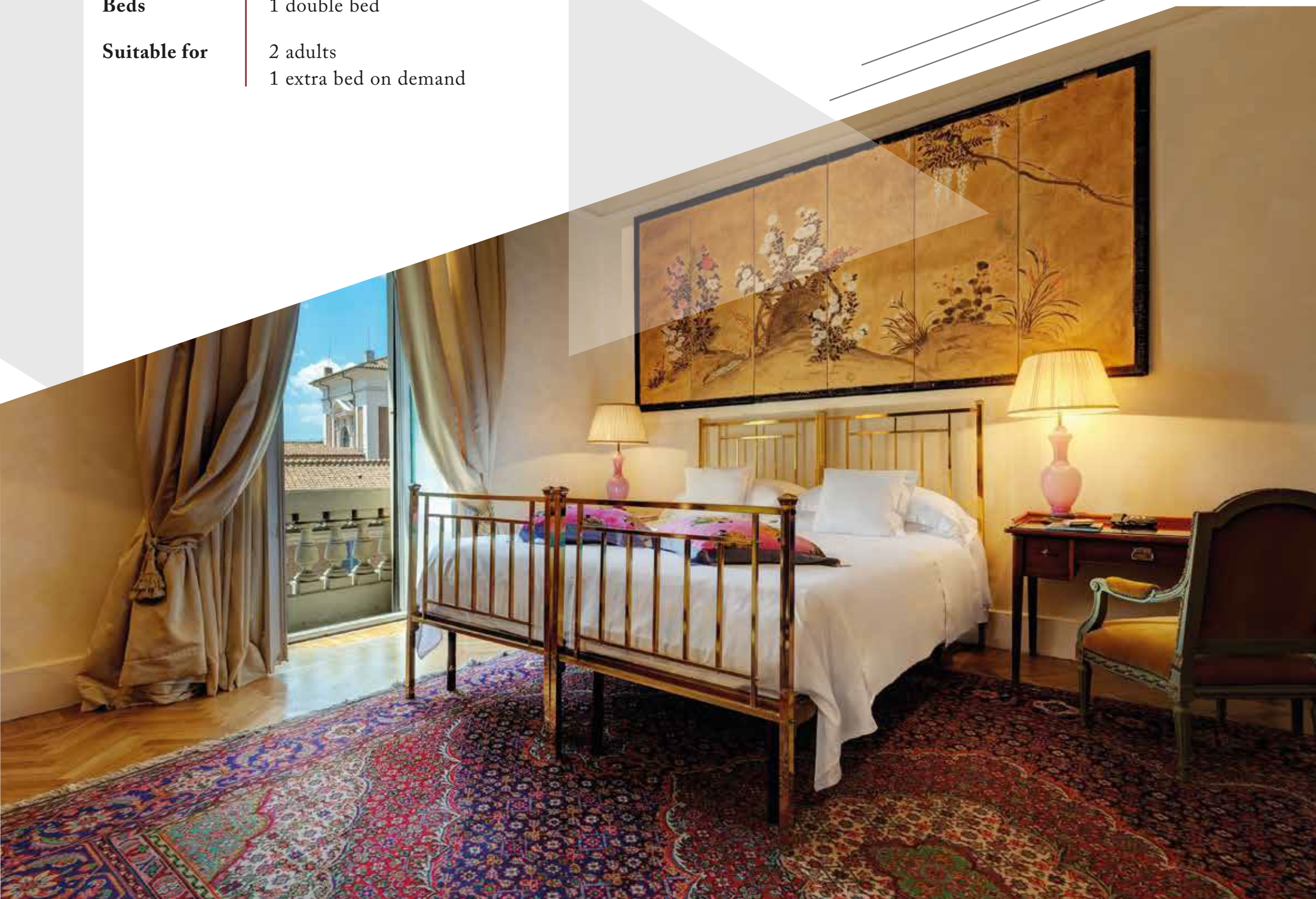
JUNIOR SUITE

View	City view / Private Terrace / Internal Garden
Dimensions	Starting from 60 sqm
Beds	1 Double bed or 2 single beds
Suitable for	2 adults 1 extra bed on demand

The Rooms

PLAZA'S SUITE

View	Private Terrace with panoramic view
Dimensions	Starting from 60 sqm
Beds	1 double bed
Suitable for	2 adults 1 extra bed on demand





GRAND HOTEL PLAZA

R O M A

GRAND HOTEL PLAZA ROMA

Via del Corso, 126 - 00186 Rome

Booking Office: +39 06 674 952

E-mail: plaza@grandhotelpiazza.com

CODICI GDS

Chain code: YX

Amadeus: ROMPLA

Galileo: 74471

Sabre: 12895

Worldspan: IGPL